
TRIBUNALE DI CASSINO

SEZIONE EE. I.I.

ESECUZIONE IMMOBILIARE 116/19

ALLEGATO 10

ELABORATI PLANIMETRICI

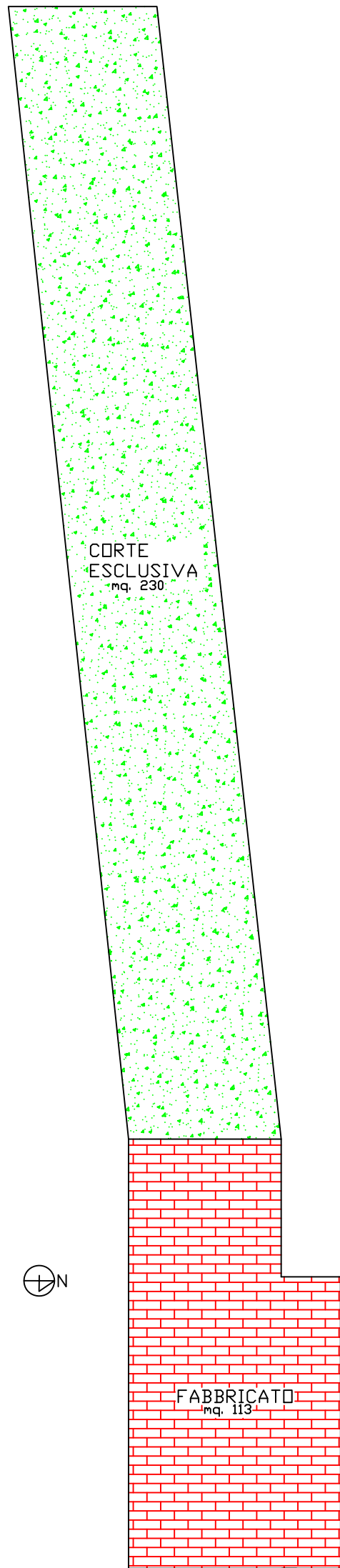


POSIZIONE BENI PIGNORATI
SCALA 1:200



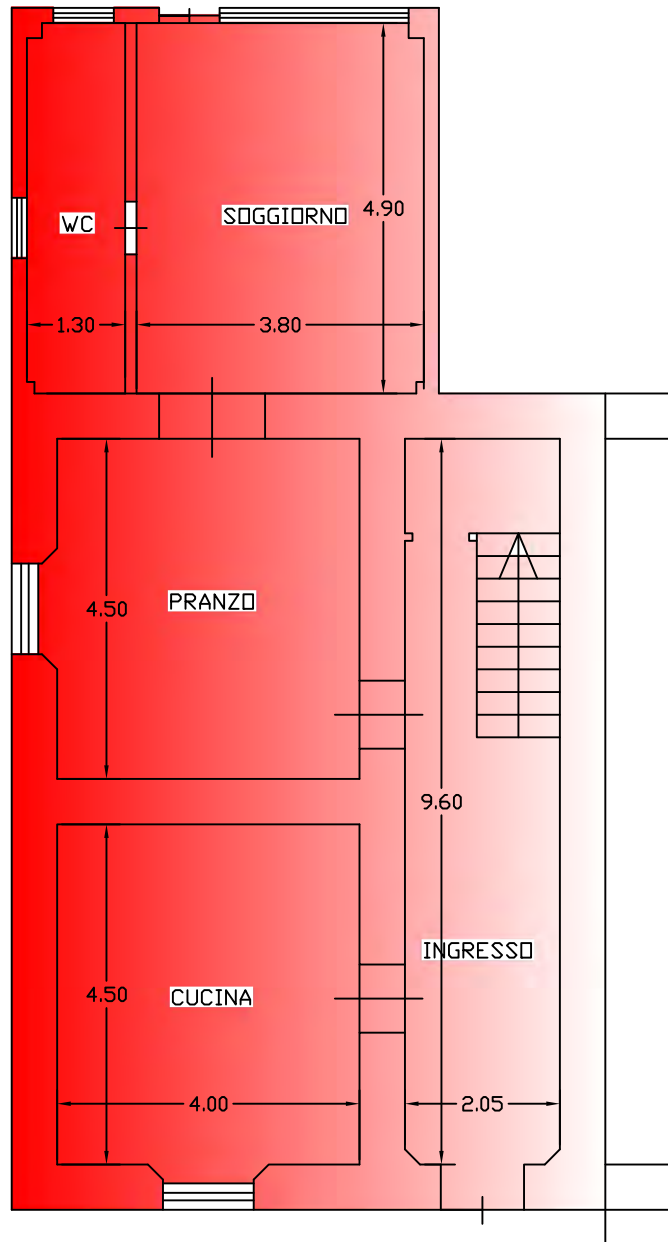
PLANIMETRIA LOTTO UNICO

SCALA 1:200

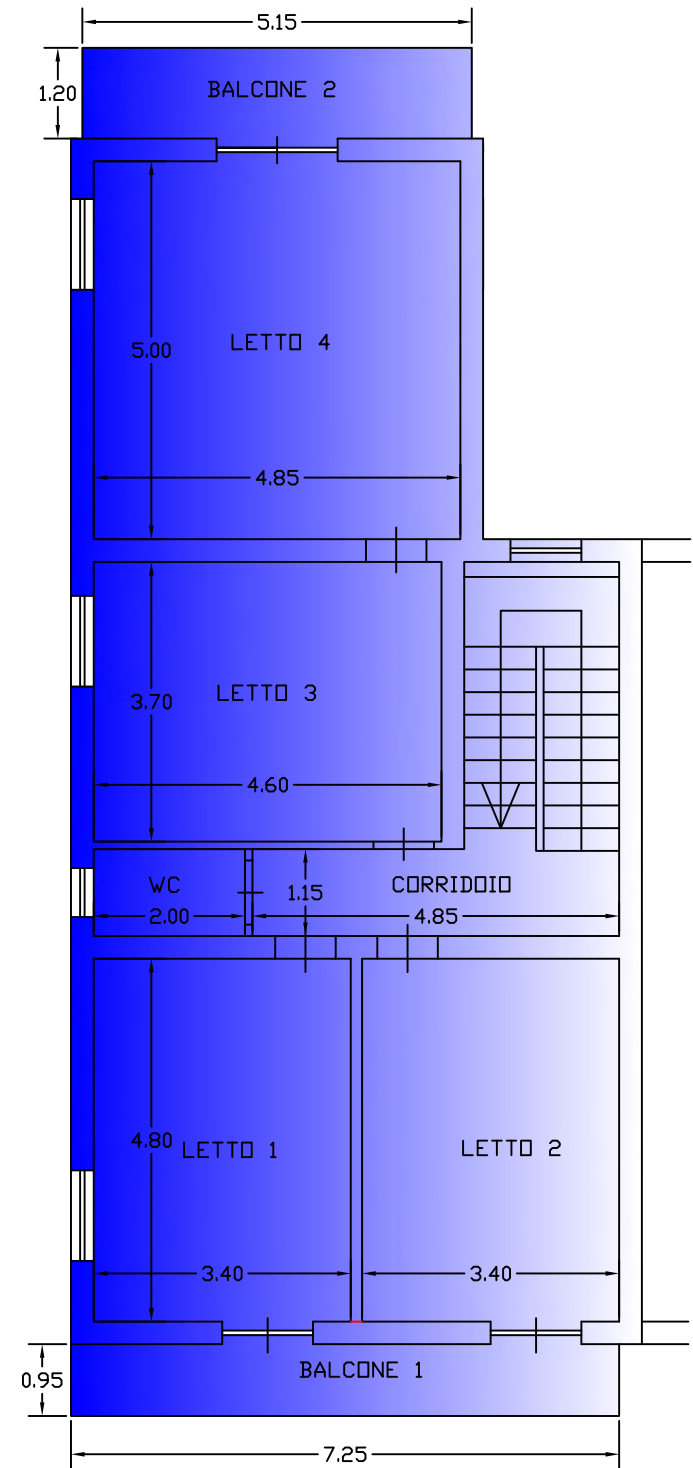


PLANIMETRIA FABBRICATO

SCALA 1:100



PIANO TERRA
H= 2.95



PIANO PRIMO
H= 3.05

SUPERFICI LORDE

P.TERRA mq. 113

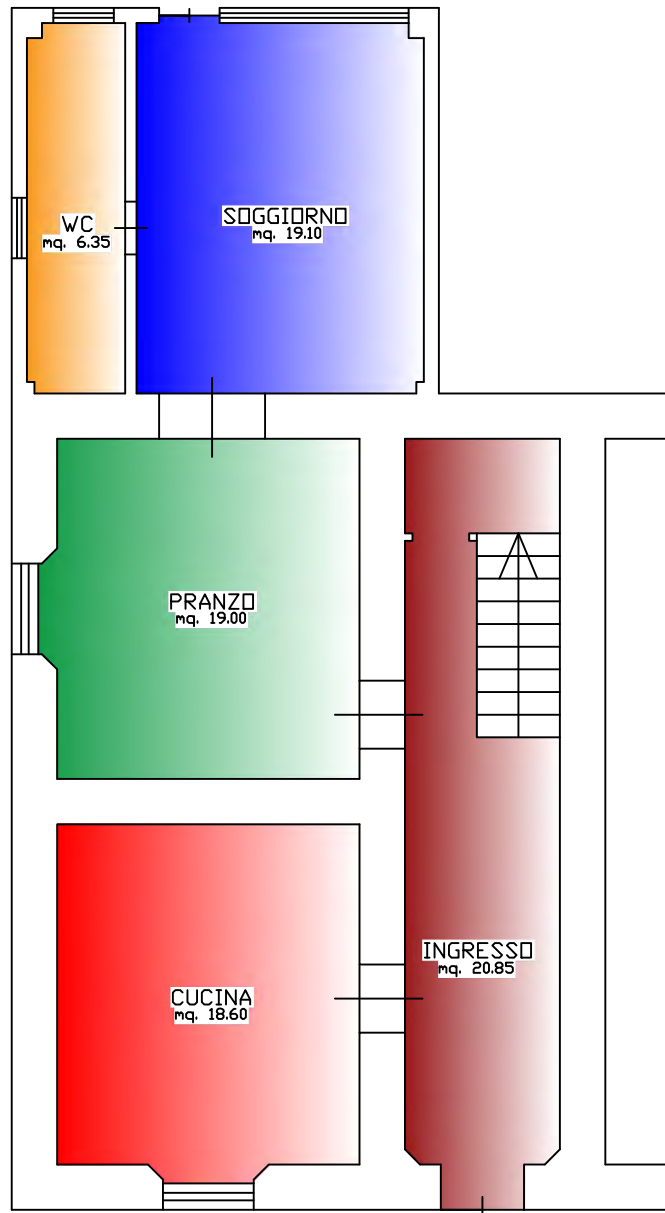
P.PRIMO mq. 122

TOT. mq. 235



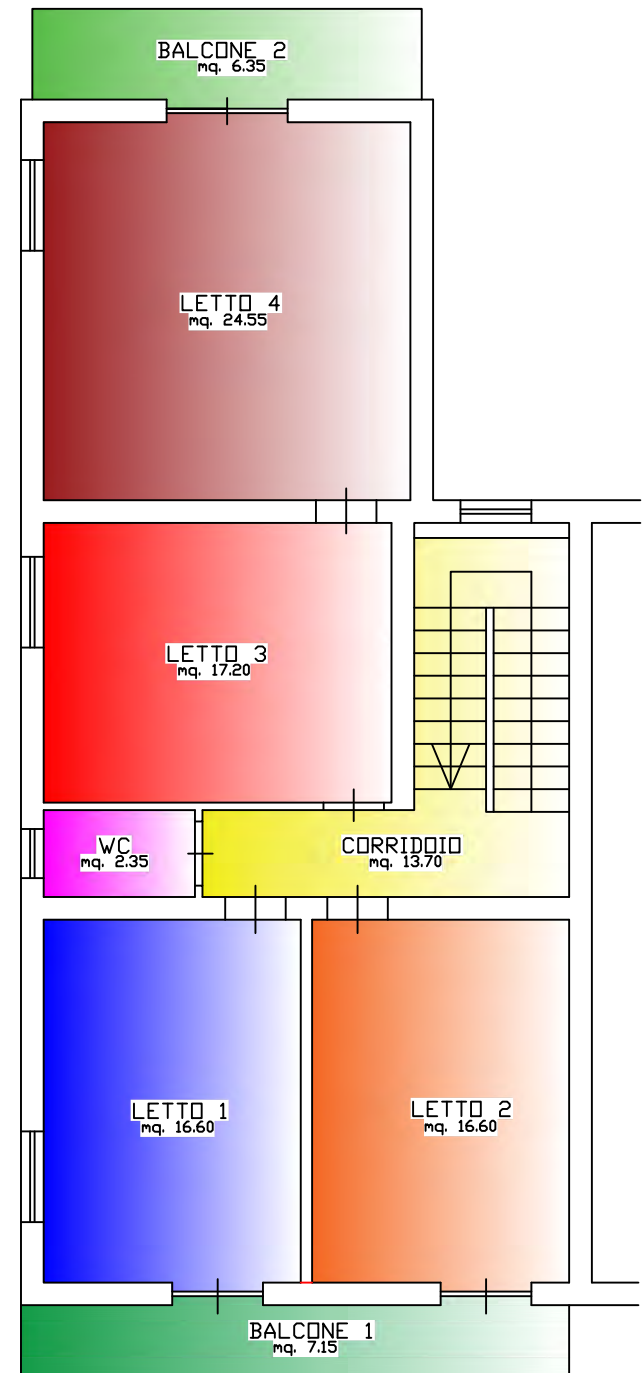
PLANIMETRIA SUPERFICI FABBRICATO

SCALA 1:100



PIANO TERRA

H= 2.95



PIANO PRIMO

H= 3.05

SUPERFICI NETTE	
P.TERRA -	- INGRESSO mq. 20.85
	- CUCINA mq. 18.60
	- PRANZO mq. 19.00
	- SOGGIORNO mq. 19.10
	- WC mq. 6.35

	TOT. mq. 83.90
P.PRIMO -	- CORRIDOIO mq. 13.70
	- LETTO1 mq. 16.60
	- LETTO2 mq. 16.60
	- LETTO3 mq. 17.20
	- LETTO4 mq. 24.55
	- WC mq. 2.35
	- BALCONE1 mq. 7.15
	- BALCONE2 mq. 6.35

	TOT. mq. 104.50

