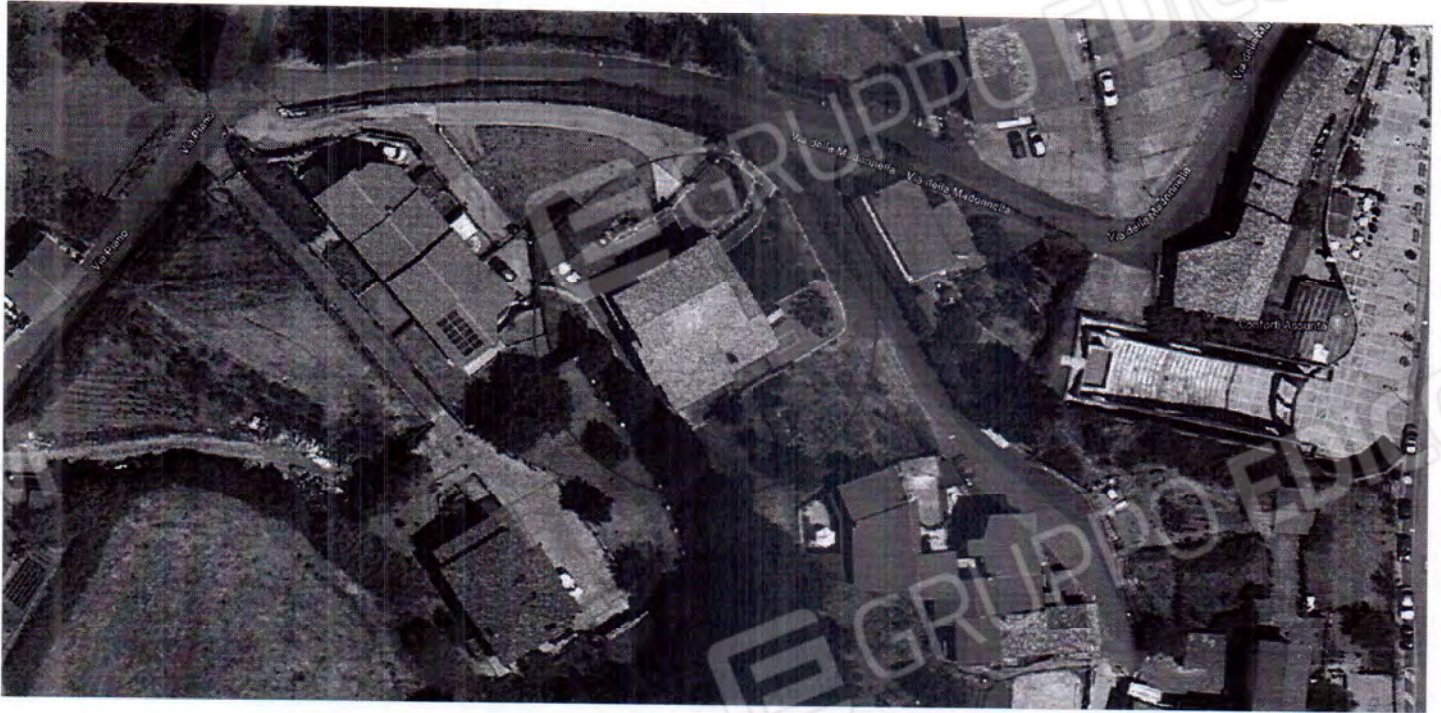


13. Si inseriscono planimetrie e documentazione fotografica:

## Ortofoto



## Direzione foto esterne

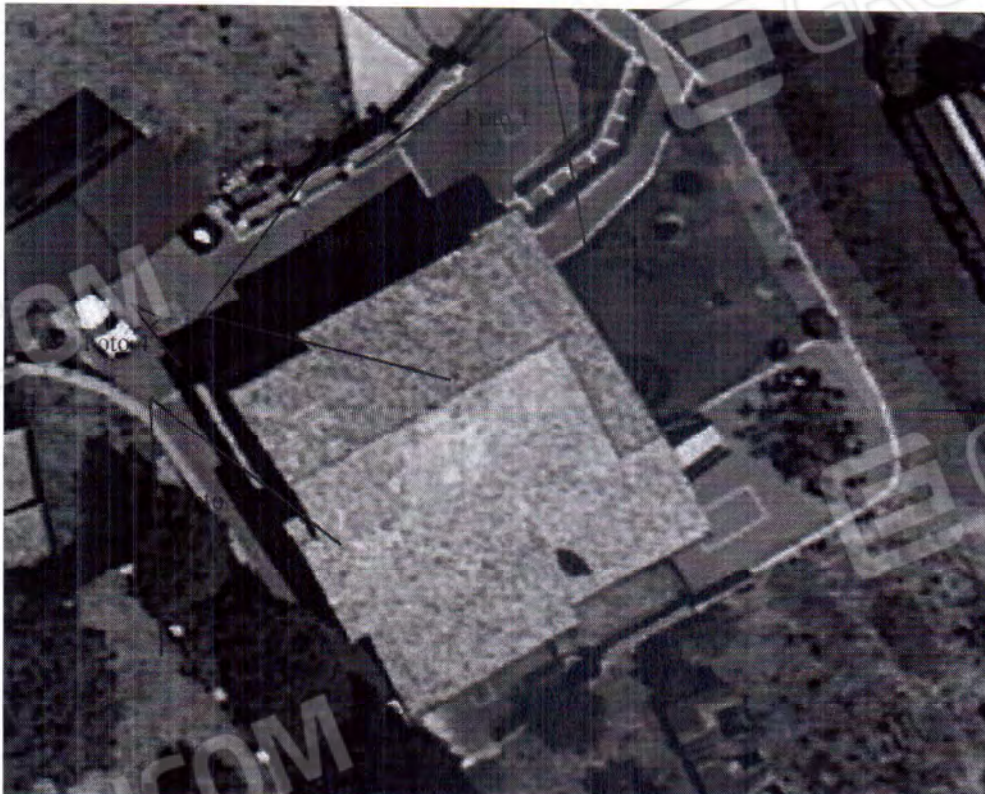


Foto 1



Foto 2



Foto 3



Foto 4



Piano seminterrato  
Superficie lorda 224,00 mq

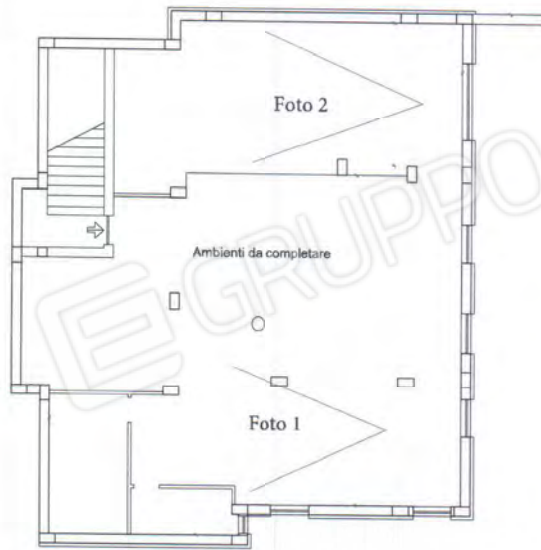


Foto 1



Foto 2



Piano terra  
Superficie lorda 246,67 mq

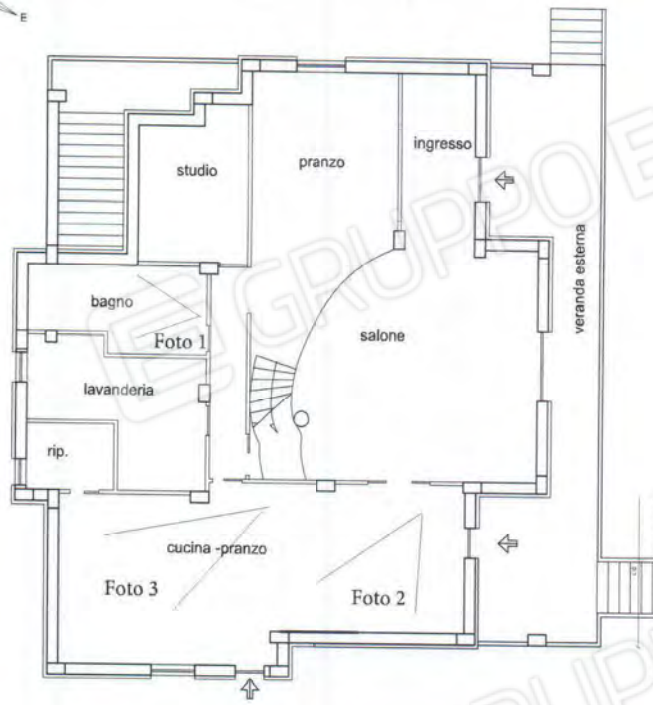


Foto 1

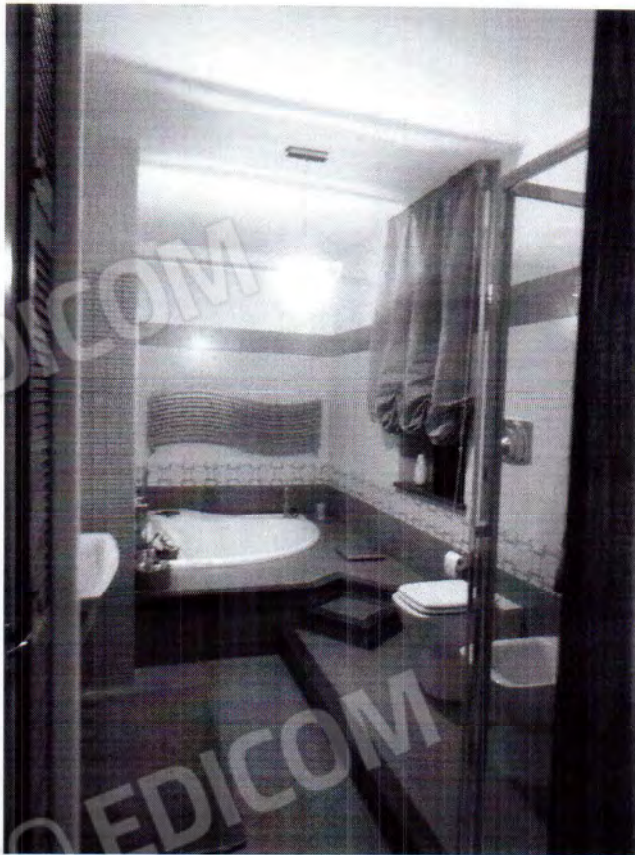


Foto 2



Foto 3



Piano terra  
Superficie lorda 246,67 mq

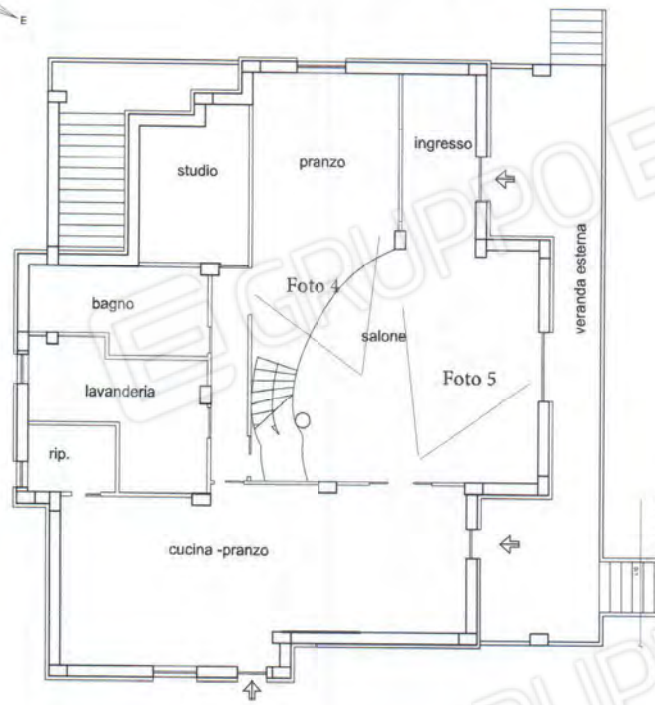


Foto 4



Foto 5



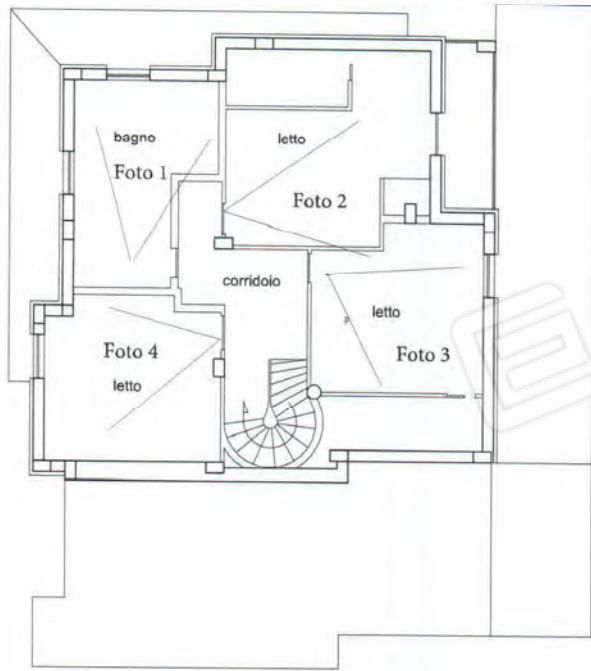


Foto 2



Foto 1



Foto 3



Foto 4



Barre acciaio



Cubetti in CLS

